




Comprehensive Green Book

 www.checkmycar.ae

 Contact Us
+971 054 409 3009

 Mail Id
Checkmycar.ae@gmail.com

Inspection Details

Date	Time	Inspection Type	VIN Number
29 May 2025	5:30 - 7:00 PM	600 Points	XXXXXXXXXXXXXXXXXXXX

Vehicle Summary

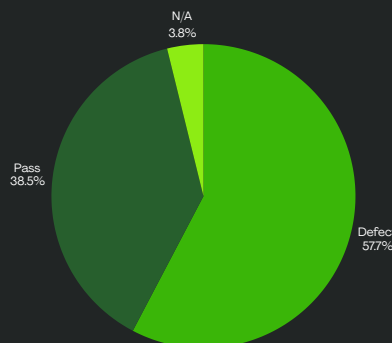
BMW 5 Series



Make	Bentley
Model	5 Series
Model Year	2019
Regional Specs	GCC
Transmission	Automatic
Engine Size	6-Cylinder
Interior	Leather
Spare Tyre	Not Available
Number of Keys	1
Vehicle Type	Sedan
External Colour	White

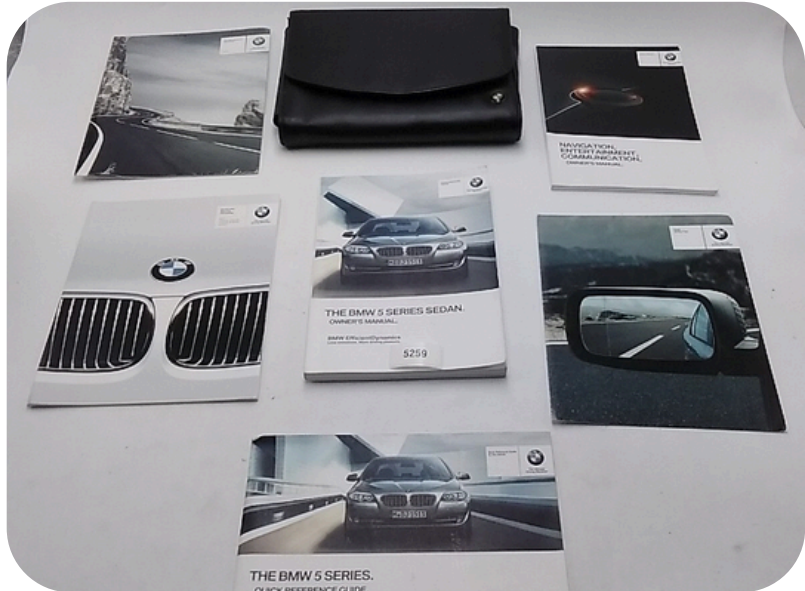
Odometer Reading	Fuel Type
12,567 Km	Petrol

Report Overview

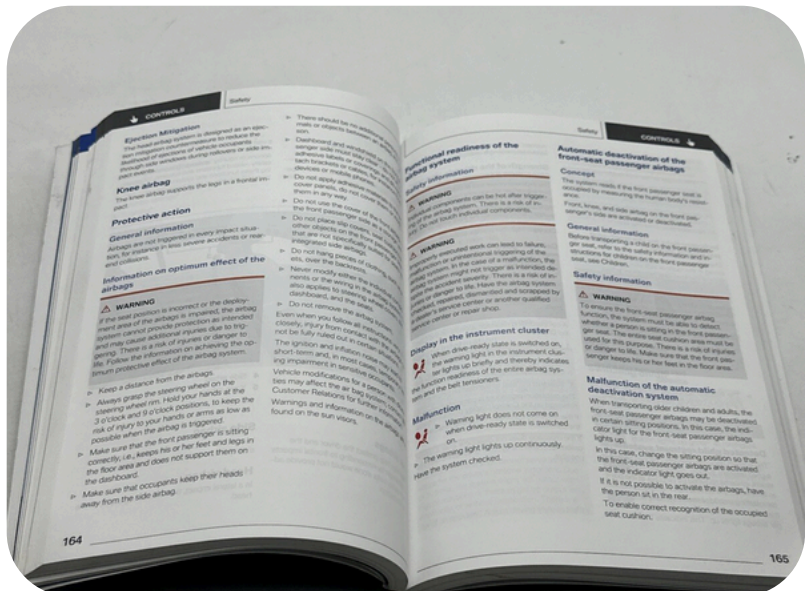


Important documents

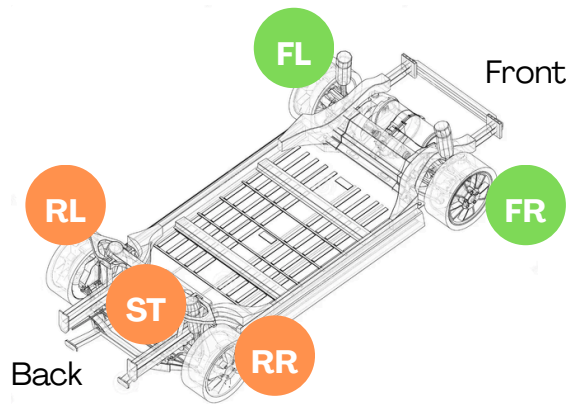
User Manual



Other



Tyres



Rear Right (RR) FAIL

Tyre Manufacturer
Nexen Nfera

Manufacturing Year
03-2017

Tyre Size:
245/35ZR19

Dry cracks Worn out



Rear Left (RL) PASS

Tyre Manufacturer
Nexen Nfera

Manufacturing Year
03-2017

Tyre Size:
245/35ZR19

Dry cracks Worn out



Tyres

Front Right (FR) FAIL

Tyre Manufacturer
Nexen Nfera

Manufacturing Year
03-2017

Tyre Size:
245/35ZR19

Dry cracks Worn out



Front Left (FL) PASS

Tyre Manufacturer
Nexen Nfera

Manufacturing Year
03-2017

Tyre Size:
245/35ZR19

Dry cracks Worn out



Spare tyre (ST) PASS

Tyre Manufacturer
Nexen Nfera

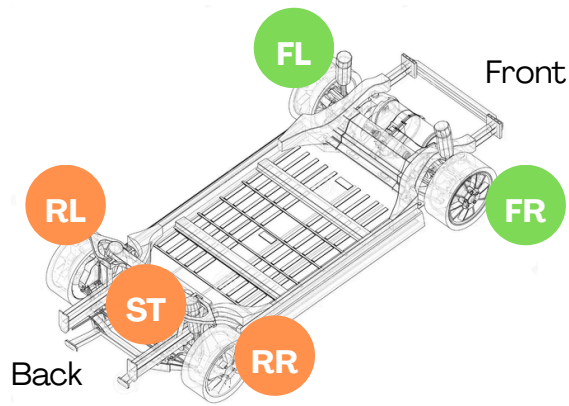
Manufacturing Year
03-2017

Tyre Size:
245/35ZR19

Dry cracks Worn out



Rim



Rear Right (RR) FAIL

Brand
Nexen Nfera

Rim Type
Original

Surface Damage



Rear Left (RL) PASS

Brand
Nexen Nfera

Rim Type
Original

Surface Damage



Rim

Front Right (FR) **FAIL**

Brand
Nexen Nfera

Rim Type
Original

Surface Damage



Front Left (FL) **PASS**

Brand
Nexen Nfera

Rim Type
Original

Surface Damage



Spare tyre (ST) **PASS**

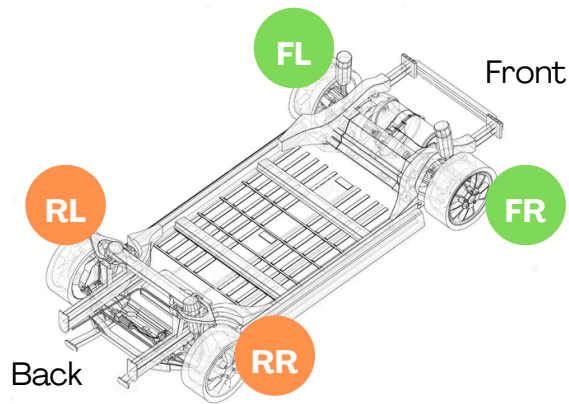
Brand
Nexen Nfera

Rim Type
Original

Surface Damage



Brake



Rear Right (RR)

Break Type

DISC

PADS **FAIL**

Need skimming



DISC **FAIL**

Need skimming



Rear Left (RL)

Break Type

DISC

PADS **FAIL**

Need skimming



DISC **FAIL**

Need skimming



Brake

Front Right (FR)

Break Type

DISC

PADS **FAIL**

Need skimming



DISC **FAIL**

Need skimming



Front Left (FL)

Break Type

DISC

PADS **FAIL**

Need skimming



DISC **FAIL**

Need skimming



TBE Test Report

ABS Sensors

FAIL

Handbrake

FAIL

Suspension

Front Suspension

FAIL

Lower arm bush minor crack / major cracked- The lower arm bush shows signs of wear, ranging from minor cracks to major damage, caused by age, stress, or environmental factors. This can affect suspension stability, increase vibrations, and lead to uneven tire wear. Timely replacement is recommended to maintain safety and performance. Labor cost: Medium to High

Link rod boot damage- The link rod boot damage indicates wear or tearing, often caused by age, stress, or exposure to harsh conditions. This can lead to grease leakage, increased joint wear, and compromised suspension stability. Prompt replacement is recommended to maintain safety and optimal performance.



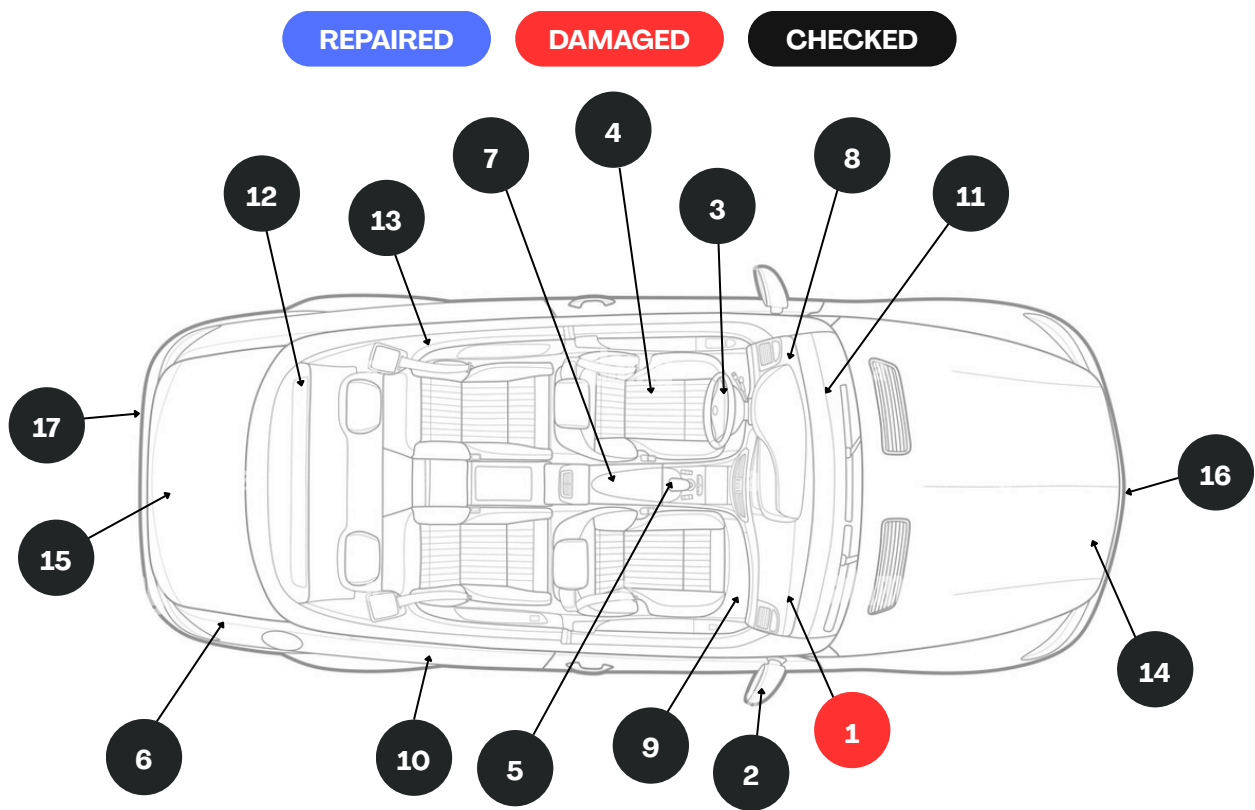
Rear Suspension

FAIL

Control arm bush minor/major damage- The control arm bush shows signs of damage, ranging from minor to major severity, caused by age, stress, or harsh driving conditions. This can compromise suspension stability, increase vibrations, and lead to uneven tire wear. Timely inspection and replacement are recommended to ensure safety and optimal performance



Interior & Exterior



- | | | |
|------------------------------|---------------------------|------------------|
| 1. Roof Lining | 7. Armrest & Side Pockets | 13. Side windows |
| 2. Rear View Mirror | 8. Dashboard | 14. Hood |
| 3. Steering Wheel Upholstery | 9. Floor Mats | 15. Trunk |
| 4. Seats Upholstery | 10. Doors | 16. Front Bumper |
| 5. Gear Lever | 11. Front Windscreen | 17. Back Bumper |
| 6. Trunk Lining | 12. Rear Windscreen | |

Seats Upholstery FAIL

Buttons wear and tear

Additional comments *Wear and tear on driver seat.*



Gear Lever

FAIL

Buttons wear and tear

Additional comments *Wear and tear on driver seat.*



Doors

FAIL

Buttons wear and tear

Additional comments *Wear and tear on driver seat.*



Rear Windscreen

FAIL

Buttons wear and tear

Additional comments *Wear and tear on driver seat.*



Electrical

Key

FAIL

Buttons wear and tear



Infotainment

FAIL

Buttons wear and tear



Windows Operation

FAIL

Buttons wear and tear



Seats Adjustment

FAIL

Buttons wear and tear



Door Lock

FAIL

Buttons wear and tear



A/C Control & Cooling

FAIL

Buttons wear and tear



Electrical

Center Console Buttons **FAIL**

Buttons wear and tear



Cameras **FAIL**

Buttons wear and tear



Gauges **FAIL**

Buttons wear and tear



Rear View / Side Mirror **FAIL**

Buttons wear and tear



A/C Grilles **FAIL**

Buttons wear and tear



Ignition System **FAIL**

Buttons wear and tear



Electrical

Brake Lights **FAIL**

Buttons wear and tear



Headlights **FAIL**

Buttons wear and tear



Fog Lights **FAIL**

Buttons wear and tear



Reverse Lights **FAIL**

Buttons wear and tear



Number Plate Lights **FAIL**

Buttons wear and tear



Indicators & Hazards **FAIL**

Buttons wear and tear



Electrical

Wipers **FAIL**

Buttons wear and tear



Soft Closing Doors **FAIL**

Buttons wear and tear



Sunroof / Moonroof **FAIL**

Buttons wear and tear



Interior Lights **FAIL**

Buttons wear and tear



Cruise Control **FAIL**

Buttons wear and tear



Horn **FAIL**

Buttons wear and tear



Electrical

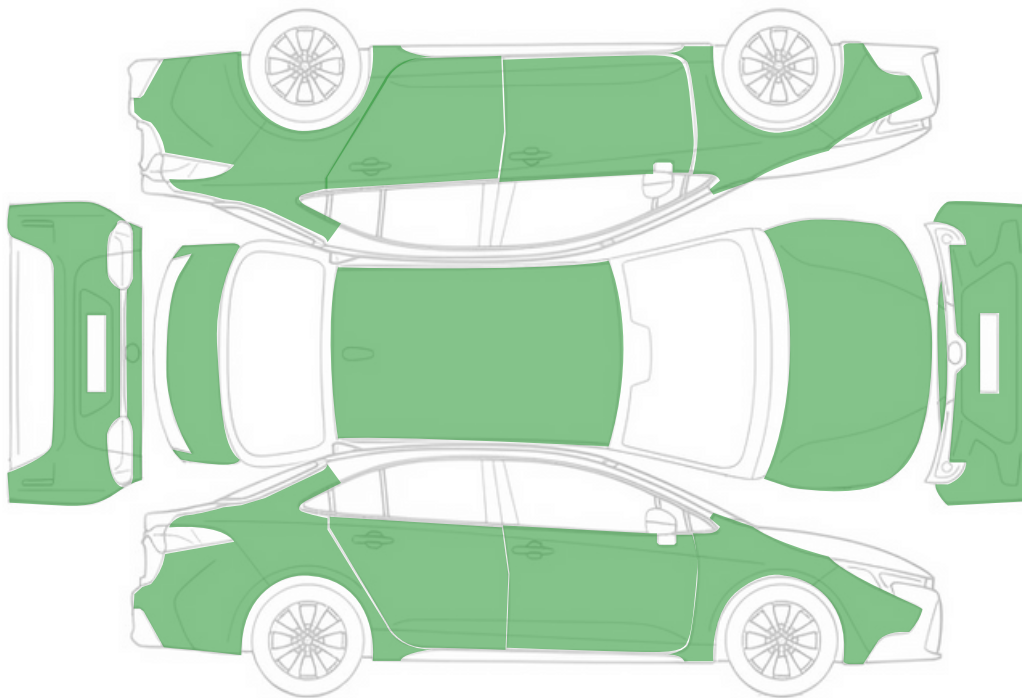
Parking Sensors **FAIL**

Buttons wear and tear



Body

Original Paint **Cosmetic Paint** **Accident Paint** **Faded Paint**
SH: Scratch **CP: Chip** **DT: Dent** **CK: Crack**



Front

Rear

Fender



Engine

Engine Upper Cover **FAIL**

RPM is fluctuating- RPM is fluctuating and can indicate issues such as a malfunctioning idle air control valve, dirty fuel injectors, spark plugs, and/or vacuum leaks, leading to inconsistent engine performance. Labor cost: Medium To High.

Engine Shield Cover **FAIL**

RPM is fluctuating- RPM is fluctuating and can indicate issues such as a malfunctioning idle air control valve, dirty fuel injectors, spark plugs, and/or vacuum leaks, leading to inconsistent engine performance. Labor cost: Medium To High.

Engine Mounts **FAIL**

RPM is fluctuating- RPM is fluctuating and can indicate issues such as a malfunctioning idle air control valve, dirty fuel injectors, spark plugs, and/or vacuum leaks, leading to inconsistent engine performance. Labor cost: Medium To High.

Bonnet Hinge & Holder **FAIL**

RPM is fluctuating- RPM is fluctuating and can indicate issues such as a malfunctioning idle air control valve, dirty fuel injectors, spark plugs, and/or vacuum leaks, leading to inconsistent engine performance. Labor cost: Medium To High.

Turbo / Supercharger **FAIL**

RPM is fluctuating- RPM is fluctuating and can indicate issues such as a malfunctioning idle air control valve, dirty fuel injectors, spark plugs, and/or vacuum leaks, leading to inconsistent engine performance. Labor cost: Medium To High.

Engine

Fender Liners **FAIL**

RPM is fluctuating- RPM is fluctuating and can indicate issues such as a malfunctioning idle air control valve, dirty fuel injectors, spark plugs, and/or vacuum leaks, leading to inconsistent engine performance. Labor cost: Medium To High.

Drive Belt / Pulleys **FAIL**

RPM is fluctuating- RPM is fluctuating and can indicate issues such as a malfunctioning idle air control valve, dirty fuel injectors, spark plugs, and/or vacuum leaks, leading to inconsistent engine performance. Labor cost: Medium To High.

Engine Idle **FAIL**

RPM is fluctuating- RPM is fluctuating and can indicate issues such as a malfunctioning idle air control valve, dirty fuel injectors, spark plugs, and/or vacuum leaks, leading to inconsistent engine performance. Labor cost: Medium To High.

Engine Oil Filler Cap **FAIL**

RPM is fluctuating- RPM is fluctuating and can indicate issues such as a malfunctioning idle air control valve, dirty fuel injectors, spark plugs, and/or vacuum leaks, leading to inconsistent engine performance. Labor cost: Medium To High.

Radiator **FAIL**

RPM is fluctuating- RPM is fluctuating and can indicate issues such as a malfunctioning idle air control valve, dirty fuel injectors, spark plugs, and/or vacuum leaks, leading to inconsistent engine performance. Labor cost: Medium To High.

Engine

Engine Oil Leaks **FAIL**

RPM is fluctuating- RPM is fluctuating and can indicate issues such as a malfunctioning idle air control valve, dirty fuel injectors, spark plugs, and/or vacuum leaks, leading to inconsistent engine performance. Labor cost: Medium To High.

Engine Oil Condition **FAIL**

RPM is fluctuating- RPM is fluctuating and can indicate issues such as a malfunctioning idle air control valve, dirty fuel injectors, spark plugs, and/or vacuum leaks, leading to inconsistent engine performance. Labor cost: Medium To High.

Coolant Condition **FAIL**

RPM is fluctuating- RPM is fluctuating and can indicate issues such as a malfunctioning idle air control valve, dirty fuel injectors, spark plugs, and/or vacuum leaks, leading to inconsistent engine performance. Labor cost: Medium To High.

Coolant Cap **FAIL**

RPM is fluctuating- RPM is fluctuating and can indicate issues such as a malfunctioning idle air control valve, dirty fuel injectors, spark plugs, and/or vacuum leaks, leading to inconsistent engine performance. Labor cost: Medium To High.

Engine

Hoses & Pipes **FAIL**

RPM is fluctuating- RPM is fluctuating and can indicate issues such as a malfunctioning idle air control valve, dirty fuel injectors, spark plugs, and/or vacuum leaks, leading to inconsistent engine performance. Labor cost: Medium To High.

Exhaust System **FAIL**

RPM is fluctuating- RPM is fluctuating and can indicate issues such as a malfunctioning idle air control valve, dirty fuel injectors, spark plugs, and/or vacuum leaks, leading to inconsistent engine performance. Labor cost: Medium To High.

Visible Rust **FAIL**

RPM is fluctuating- RPM is fluctuating and can indicate issues such as a malfunctioning idle air control valve, dirty fuel injectors, spark plugs, and/or vacuum leaks, leading to inconsistent engine performance. Labor cost: Medium To High.

Water scaling/dirt marks **FAIL**

RPM is fluctuating- RPM is fluctuating and can indicate issues such as a malfunctioning idle air control valve, dirty fuel injectors, spark plugs, and/or vacuum leaks, leading to inconsistent engine performance. Labor cost: Medium To High.

Transmission

Transmission Fluid Level & Condition FAIL

RPM is fluctuating- RPM is fluctuating and can indicate issues such as a malfunctioning idle air control valve, dirty fuel injectors, spark plugs, and/or vacuum leaks, leading to inconsistent engine performance. Labor cost: Medium To High.

Transmission Fluid Leaks FAIL

RPM is fluctuating- RPM is fluctuating and can indicate issues such as a malfunctioning idle air control valve, dirty fuel injectors, spark plugs, and/or vacuum leaks, leading to inconsistent engine performance. Labor cost: Medium To High.

Gear Selector FAIL

RPM is fluctuating- RPM is fluctuating and can indicate issues such as a malfunctioning idle air control valve, dirty fuel injectors, spark plugs, and/or vacuum leaks, leading to inconsistent engine performance. Labor cost: Medium To High.

Unusal Noise FAIL

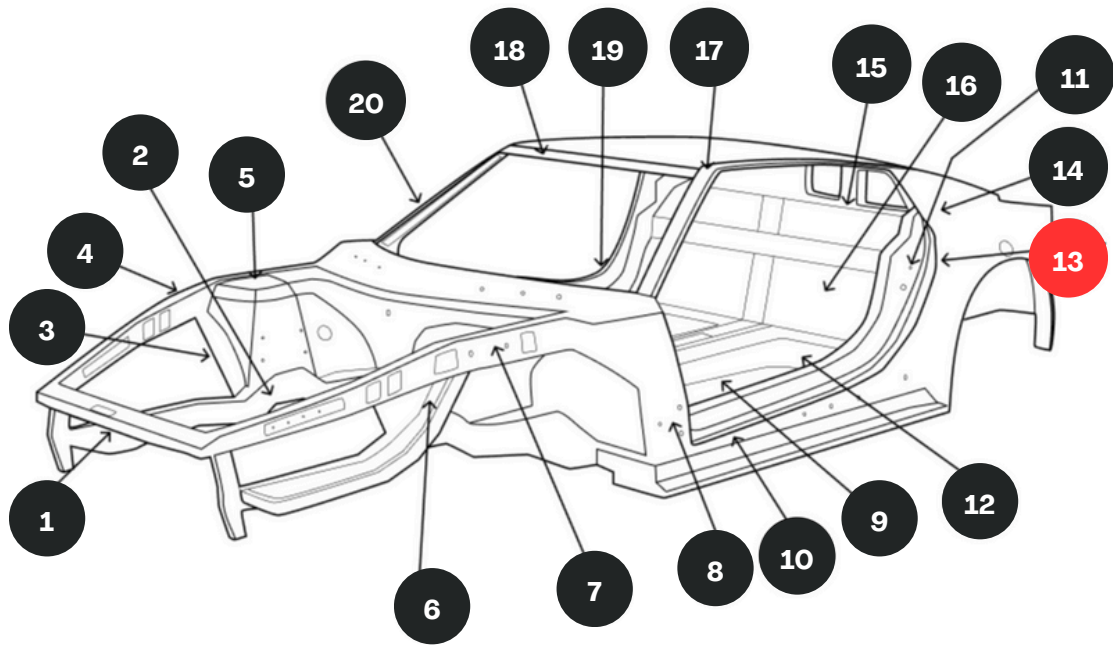
RPM is fluctuating- RPM is fluctuating and can indicate issues such as a malfunctioning idle air control valve, dirty fuel injectors, spark plugs, and/or vacuum leaks, leading to inconsistent engine performance. Labor cost: Medium To High.

Gear Shifting FAIL

RPM is fluctuating- RPM is fluctuating and can indicate issues such as a malfunctioning idle air control valve, dirty fuel injectors, spark plugs, and/or vacuum leaks, leading to inconsistent engine performance. Labor cost: Medium To High.

Chasis & Subframe

REPAIRED DAMAGED CHECKED



- | | | |
|--|----------------------------------|----------------------|
| 1. Core support | 8. Front body hinge pillar | 15. Seat frame |
| 2. Frame rail | 9. Front floor board | 16. Rear floor panel |
| 3. Wheel house | 10. Left door sill | 17. Left A pillar |
| 4. Right fender apron | 11. Center pillar post(B pillar) | 18. Roof panel |
| 5. Shock tower/shock mount | 12. Mid floor board | 19. Left door sill |
| 6. Radiator side support (side baffle) | 13. Body quarter panel | 20. Right A pillar |
| 7. Left fender apron | 14. C pillar | |

General Photos

Exterior



General Photos

Interior



General Photos

Engine Bay & Undercarriage



Inspector Comment

Comment

Cosmetic paint found on vehicle body. Silicone stains found on front bumper & head lights. Oil leak detected from multiple places. Suspension faults detected. Number plate light defective warning light showing on instrument cluster. Dirt & water scaling found on engine Bay and Undercarriage. Several error codes were found in diagnosis reports.

Photos and Files



Disclaimer and Liability Policy

Inspection Accuracy Disclaimer

1. No Guarantee of Vehicle Condition

CheckMyCar conducts visual, non-invasive vehicle inspections at the time of assessment. The resulting report reflects the Inspector's professional observations to the best of their ability. However, it does not constitute a comprehensive or conclusive evaluation of the vehicle's overall condition. CheckMyCar disclaims all liability for any discrepancies, interpretations, or omissions related to vehicle conditions not identified during the inspection.

2. Seller Acknowledgment of Inspection Scope

By consenting to the inspection, the Seller acknowledges that the report is based solely on the Inspector's professional judgment and may differ from other assessments. CheckMyCar bears no responsibility for any disputes related to pre-existing defects or undeclared conditions not disclosed by the Seller.

Limitation of Liability to Sellers

3. No Contractual Liability to Seller

CheckMyCar's contractual obligation is solely to the Buyer. The inspection service is rendered for the Buyer's benefit, and CheckMyCar shall not be held liable to the Seller under any circumstances. Any disagreement regarding the report's findings must be resolved directly between the Buyer and Seller.

Seller Consent and Agreement

4. Acceptance of Independent Inspection Report

By permitting the inspection, the Seller agrees not to hold CheckMyCar liable for any disputes, claims, or discrepancies that may arise from the contents of the inspection report. The Seller understands that the report is an independent evaluation and does not affirm or validate the Seller's own representations about the vehicle.

Dispute Resolution

5. Resolution Process for Inspection-Related Disputes

In the event of a dispute by the Seller concerning the inspection findings and any resulting claims, all parties (Buyer, Seller, and CheckMyCar) agree to first engage in good-faith negotiations. Should the matter remain unresolved, it shall be subject to mediation or binding arbitration under the rules of the Dubai International Arbitration Centre (DIAC). CheckMyCar's liability, if any, shall be strictly limited as outlined in Section 10.

Disclaimer and Liability Policy

Indemnification

6. Seller's Obligation to Indemnify

The Seller agrees to indemnify, defend, and hold CheckMyCar harmless against any losses, claims, or disputes arising from inaccurate, misleading, or omitted information in the Seller's description of the vehicle prior to the inspection.

Thank You for Choosing CheckMyCar

 www.checkmycar.ae

